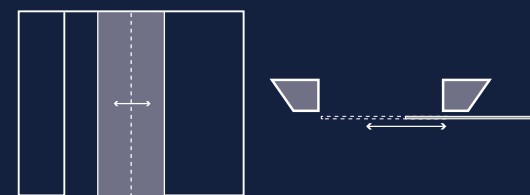


# SCORREVOLE ESTERNO MURO INSIDE

## VITRA EXTERNAL WALL SLIDING DOOR INSIDE

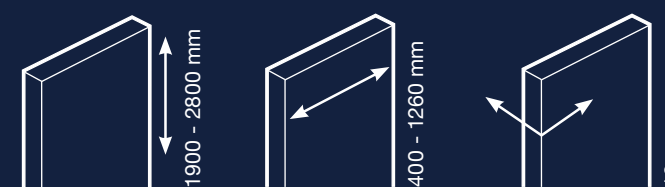
Porta scorrevole esterno muro Inside /  
Porte coulissante devant cloison Inside



Vitra external wall sliding Inside door includes a sliding system completely built-in plasterboard, obtaining extremely clean and light shapes.

Vitra scorrevole esterno muro Inside prevede un sistema di scorrimento completamente incassato nel cartongesso ottenendo un'estrema pulizia e leggerezza formale.

Vitra porte coulissante Inside devant cloison prévoit un système de coulissement complètement encastré dans le placoplâtre, pour un aspect extrêmement net, à la légèreté formelle.



**Dimensions on demand.** The doors can be customized with a maximum width of 1260 mm and a maximum height of 2800 mm. Glass thickness 10 mm (tempered monolithic or tempered stratified).

**Dimensioni su misura.** Le ante sono personalizzabili in larghezza fino a un massimo di 1260 mm, in altezza fino a un massimo di 2800 mm. Spessore vetro 10 mm (monolitico temperato o stratificato temperato).

**Dimensions personnalisées.** Les portes sont personnalisables en largeur jusqu'à 1260 mm, et en hauteur jusqu'à 2800 mm. Épaisseur du verre 10 mm (monolithique trempé ou feuilleté trempé).

# THIS IS NOT A DOOR, IT IS THE REFLEX OF YOUR DREAMS.

Questa non è una porta, è il riflesso dei vostri sogni. / Plus qu'une porte, le reflet de vos rêves.

# A DOOR THAT OPENS NEW SPACES TO SENSES.

Una porta che apre nuovi spazi ai sensi. / Une porte  
pour ouvrir les sens sur de nouveaux espaces.

External wall sliding door, clear grey monolithic glass, round handle in  
anodized aluminium

Porta scorrevole esterno muro, vetro monolitico grafite trasparente,  
anello anodizzato alluminio

Porte coulissante devant cloison, verre monolithique graphite  
transparent; anneau en aluminium anodisé



# TRANSPARENT TONES FOR A CLEAR STYLE.

Toni trasparenti per uno stile chiaro. / Des tons  
transparents pour un style clair.



External wall sliding door, clear bronze stratified reflective glass, flush  
handle in titanium anodized finish

Porta scorrevole esterno muro, vetro stratificato bronzo trasparente  
riflettente, maniglia a filo anodizzata titanio

Porte coulissante devant cloison, verre feuilleté réfléchissant bronze  
transparent, poignée encastrée en finition titane anodisé

External wall sliding door, clear water stratified glass, squared HG600 pull handle in stainless steel

Porta scorrevole esterno muro, vetro stratificato acqua trasparente, maniglione quadro HG600 in acciaio

Porte coulissante devant cloison, verre feuilleté eau transparent, poignée carrée HG600 en acier.

# OPENINGS ON DAILY LIFE.

Aperture sulla vita quotidiana. / Ouvertures sur  
le quotidien.

External wall sliding door, clear monolithic glass, flush handle in  
anodized aluminium

Porta scorrevole esterno muro, vetro monolitico trasparente,  
maniglia a filo anodizzata alluminio

Porte coulissante devant cloison, verre monolithique transparent;  
poignée encastrée en aluminium anodisé





# ENCHANTING TONES FOR A HOMELY ATMOSPHERE.

Toni avvolgenti per un'atmosfera accogliente. / Des  
tons enveloppants pour une atmosphère accueillante.

External wall sliding door, frosted bronze monolithic glass, rounded  
HG1250 pull handle in stainless steel

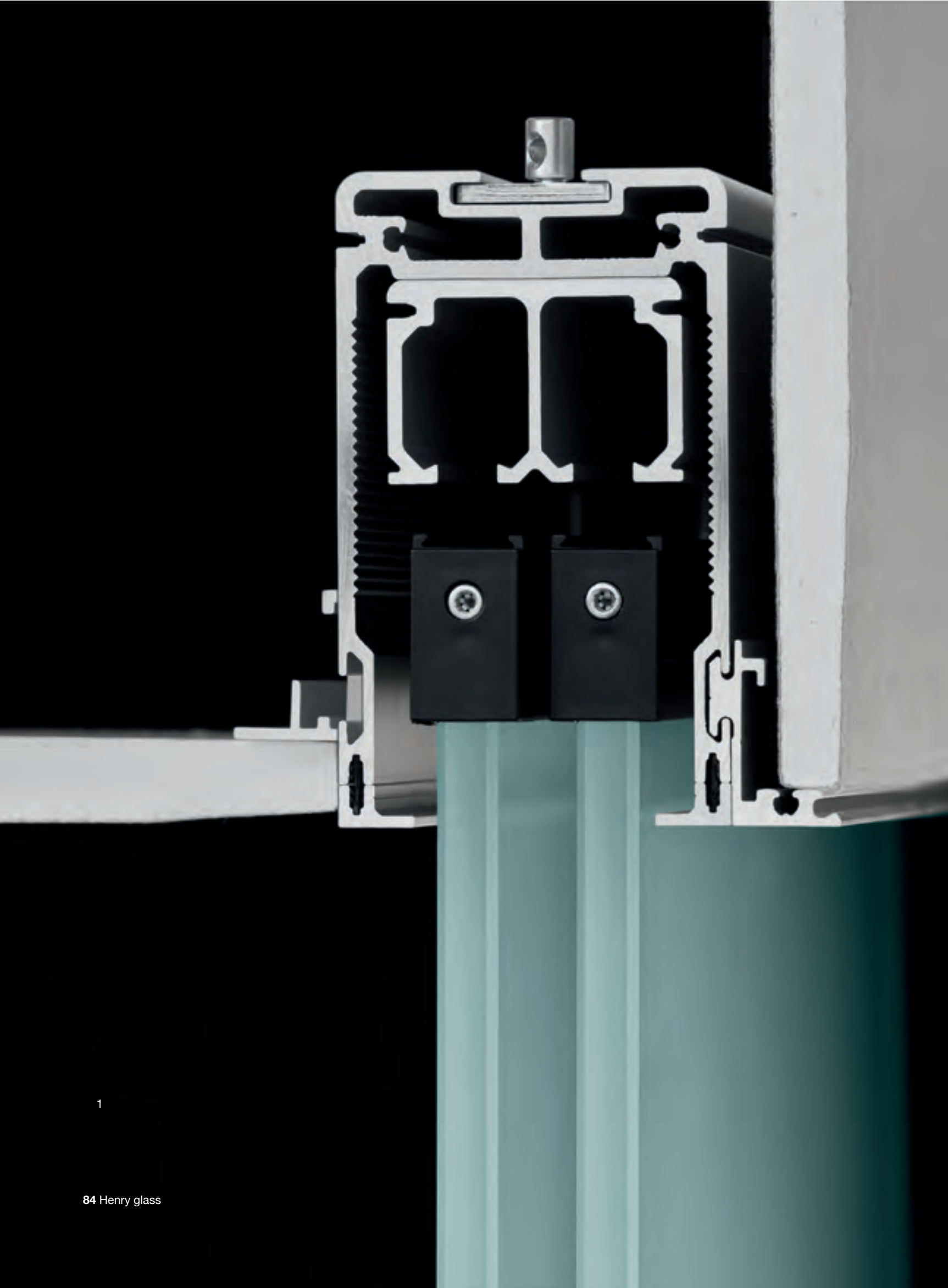
Porta scorrevole esterno muro, vetro monolitico bronzo satinato,  
maniglione tondo HG1250 in acciaio

Porte coulissante devant cloison, verre monolithique bronze dépoli,  
poignée rond HG1250 en acier









- 1 Double track section
- 2 Glass built-in inside the false ceiling
- 3 Floor guide

- 1 Sezione doppio binario
- 2 Vetro incassato nel controsoffitto
- 3 Guida a pavimento

- 1 Section du double rail
- 2 Verre encastré dans le faux-plafond
- 3 Guide de sol



## DETAILS OF VITRA EXTERNAL WALL SLIDING DOOR INSIDE

VITRA porta scorrevole esterno muro Inside dettagli / Détails de porte devant cloison Inside VITRA